

News Release

MISCO uses SoundCheck™ for final testing of high end loudspeakers.

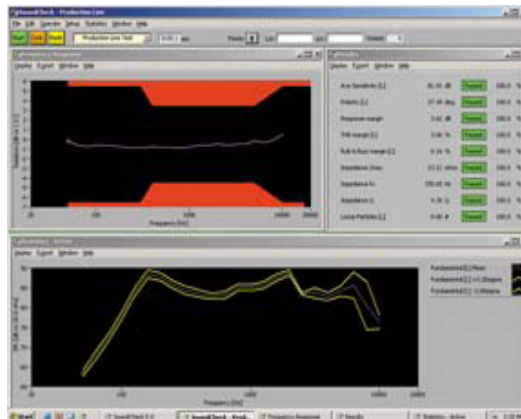


SoundCheck™ is an advanced and accurate software package for production line testing of loudspeakers. It measures all faults detectable by the human ear, and more. In addition it is fast, accurate in high noise production environments, and is integrated into MISCO's production lines.

More accurate than the 'Golden Ears' MISCO uses SoundCheck to detect defects such as rub & buzz, loose particles, frequency response, THD, Q, impedance, as well as faults undetectable by the human ear such as reverse polarity. Unlike human listeners, SoundCheck does not develop ear fatigue and can save data for statistical process control purposes.

MISCO Transducer Tests

- Frequency response
- Impedance (f_0 , Z_{max} , Q)
- Polarity
- Sensitivity
- THD
- Rub & Buzz
- Loose particle detection



For more information on SoundCheck™, go to www.listeninc.com